

Slingshot 1 & 2

Paws 'n Effect

June 18 2026

Hamden, Ct

Mid-Course Challenge

Handler must stay behind Blue or Red

line while the dog completes the

required obstacles to get a multiplier!

In order to attain the 3X multiplier the

handler must stay behind the Red Line

while the dog performs obstacles 2-4

and 8-10 as marked on the map. In

order to attain the 1.5X multiplier the

handler must stay behind the Blue

Line while the dog performs obstacles

3,4 and 8,9 as marked on the map.

In addition, all obstacles on the course

must be performed without any

required corrections to qualify with a

multiplier. Obstacle corrections allow

for a score but in that case the

multiplier is voided.

Handlers may choose to run the

entire path with their dog for no

multiplier.

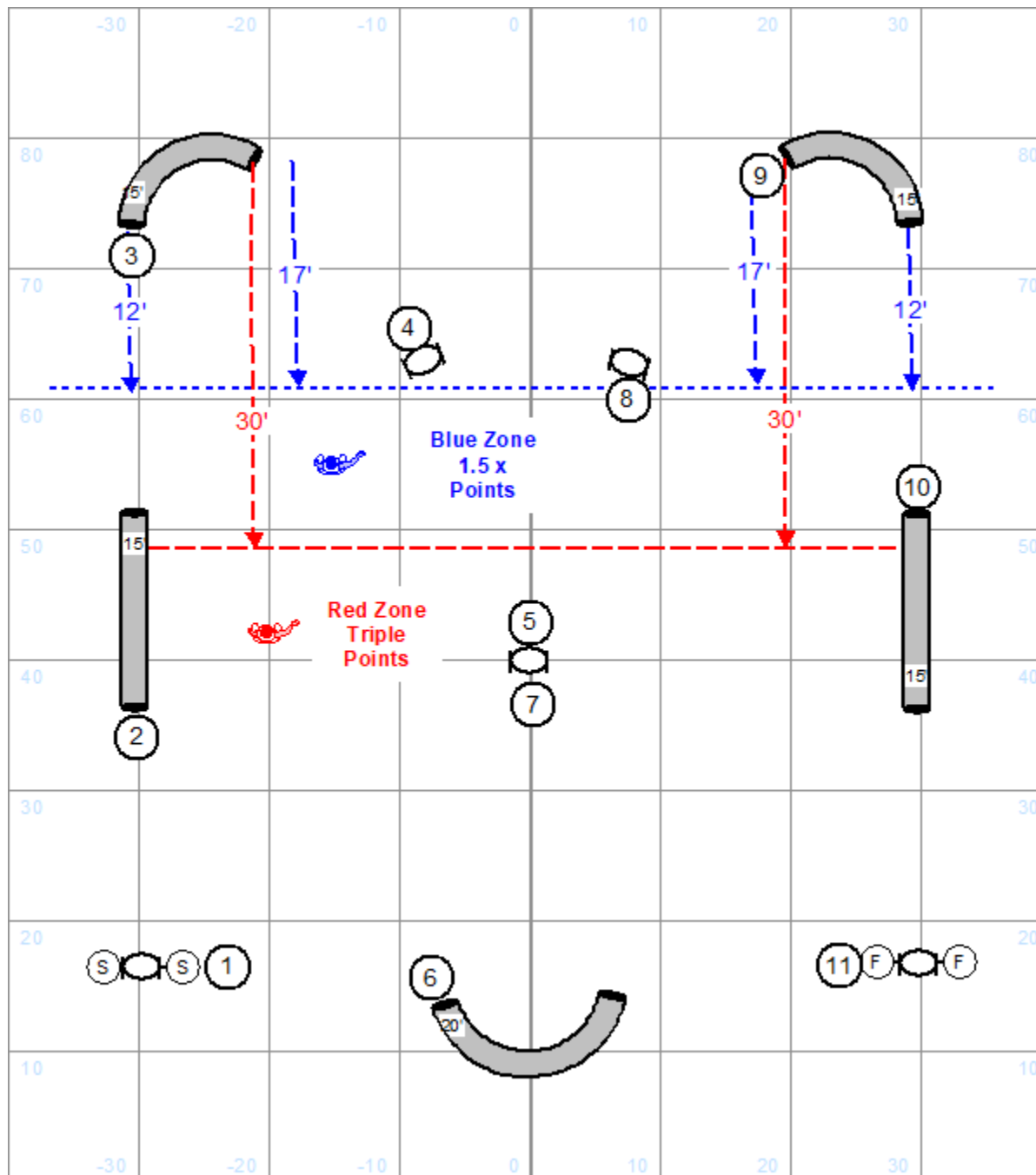
Tunnel Bags

10' Tunnel minimum 3

15' Tunnel minimum 4

20' Tunnel minimum 6

**Start and Finish
Obstacles
are Bidirectional**



Slingshot 1 & 2

Paws 'n Effect

June 18 2026

Hamden, Ct

Mid-Course Challenge

Handler must stay behind Blue or Red

line while the dog completes the

required obstacles to get a multiplier!

In order to attain the 3X multiplier the

handler must stay behind the Red Line

while the dog performs obstacles 2-4

and 8-10 as marked on the map. In

order to attain the 1.5X multiplier the

handler must stay behind the Blue

Line while the dog performs obstacles

3,4 and 8,9 as marked on the map.

In addition, all obstacles on the course

must be performed without any

required corrections to qualify with a

multiplier. Obstacle corrections allow

for a score but in that case the

multiplier is voided.

Handlers may choose to run the

entire path with their dog for no

multiplier.

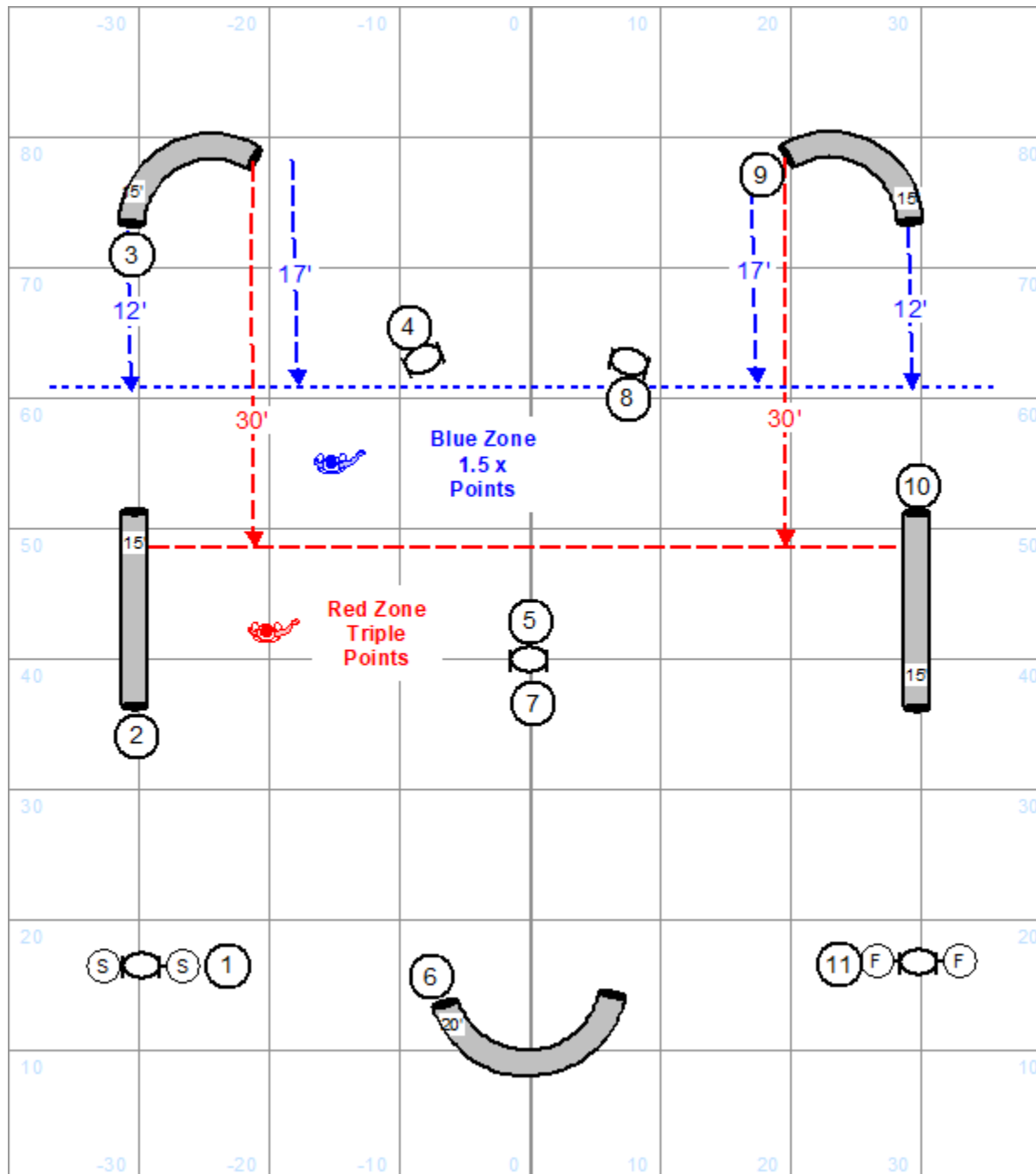
Tunnel Bags

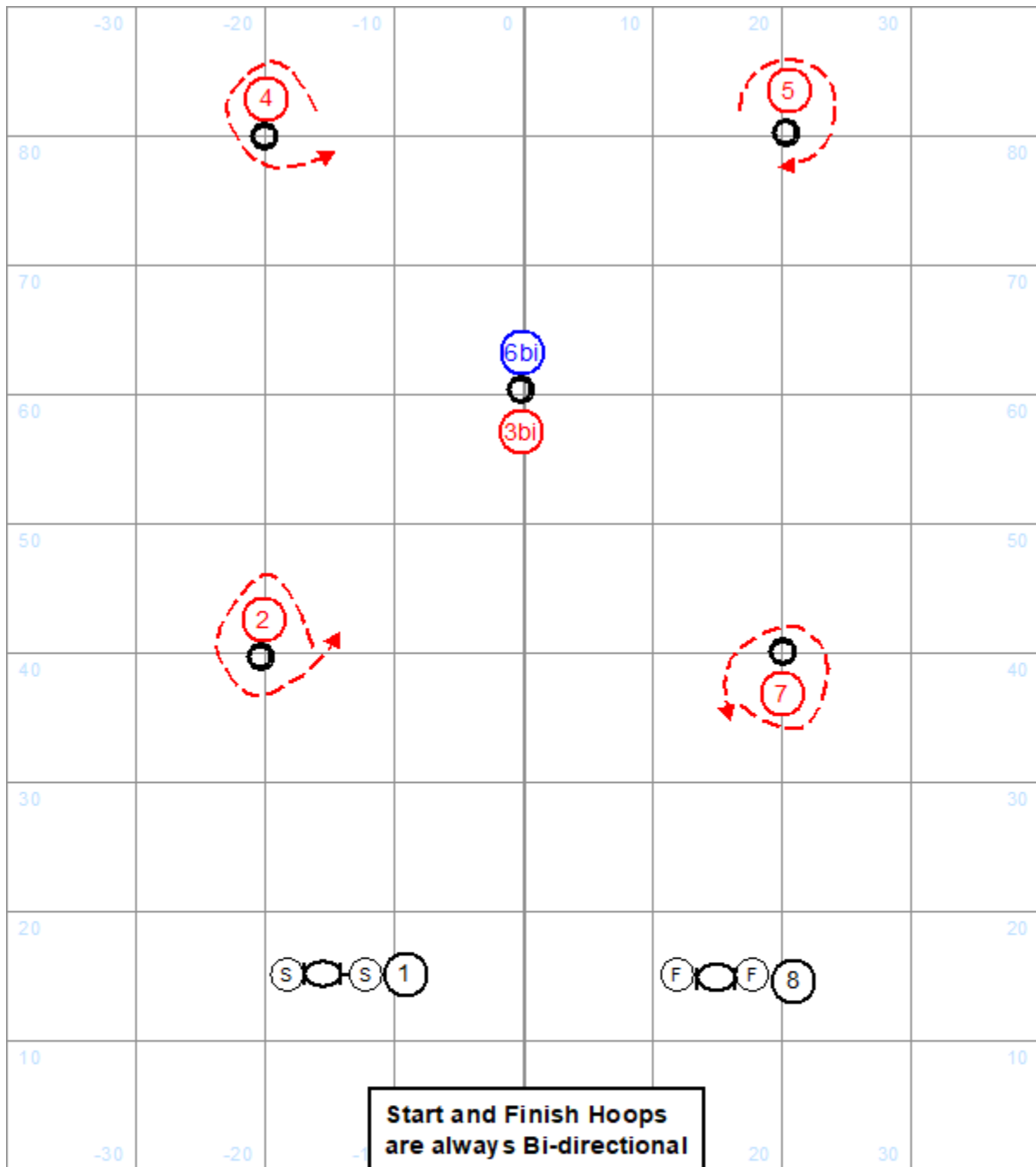
10' Tunnel minimum 3

15' Tunnel minimum 4

20' Tunnel minimum 6

**Start and Finish
Obstacles
are Bidirectional**





Pole Position Solo

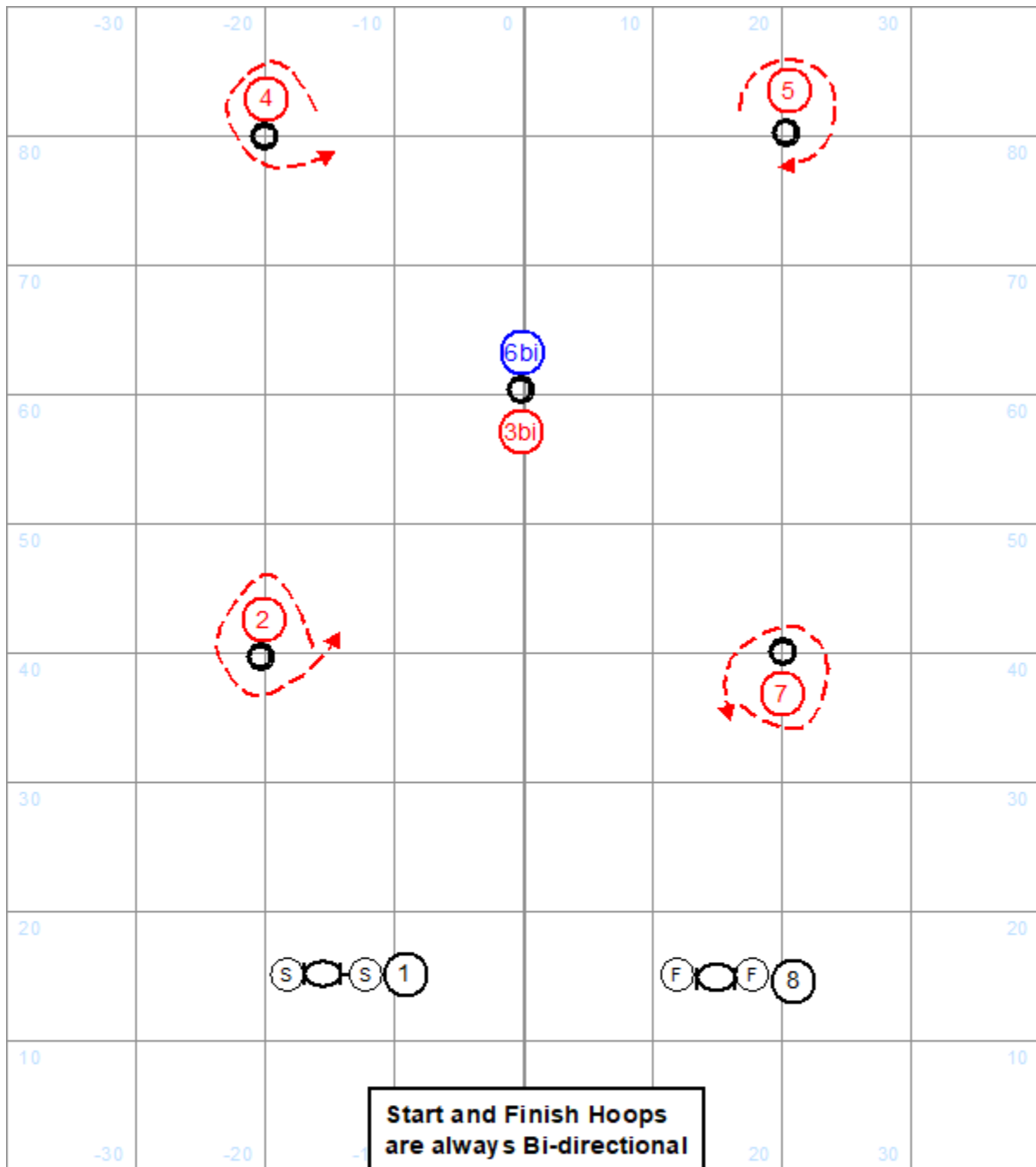
Paws 'n Effect

June 18 2026

Hamden, Ct

General Reminders: Start and finish hoops are Bi-Directional. The number is on the side of the barrel the dog should approach from. Fix any errors (dog going the wrong way around a barrel or taking an incorrect barrel). **Dog Starts each barrel on the side the number is shown.**

Barrels 3 and 6 are Bi-directional but your dog MUST go around the barrel in one direction or the other.



Pole Position Solo

Paws 'n Effect

June 18 2026

Hamden, Ct

General Reminders: Start and finish hoops are Bi-Directional. The number is on the side of the barrel the dog should approach from. Fix any errors (dog going the wrong way around a barrel or taking an incorrect barrel). **Dog Starts each barrel on the side the number is shown.**

Barrels 3 and 6 are Bi-directional but your dog MUST go around the barrel in one direction or the other.